



厦门友盟电子有限公司

XIAMEN UME ELECTRONICS CO., LTD.

## 产品规格承认书 SPECIFICATION

文件编号 File No.: UME-EG-SP22062801/A1

客户 Customer	AKON	核准 Approval	JB
品名 Product	开关电源 Switching power supply	品管确认 QC	LTF
型号 Model	AD-AKA240P500	审核 Check	ZL
日期 Date	2022-06-28	拟制 Execution	BMD

客户承认意见 Confirmation by Customer	客户签署 Stamp & Signature
<input type="checkbox"/> 合格 <b>Accept</b>	
<input type="checkbox"/> 不合格 <b>Reject</b>	
<input type="checkbox"/> 条件合格 <b>Conditional Acceptance</b>	

确认签署后，请回传一份。有任何问题，请尽快告知我们。

Please return one copy to us with your signature and feel free to contact us for any questions.

厦门友盟电子有限公司

XIAMEN UME ELECTRONICS CO., LTD.

电话 Tel:0592-2611448

地址:厦门湖里区殿前一路536号

Add:NO. 536 Dianqian YiLu, Huli District, Xiamen.



<b>产品规格承认书</b> <b>SPECIFICATION</b>				文件编号 File No.	UME-EG-SP22062801/A1
品名 Product	开关电源 SPS	型号 Model	AD-AKA240P500	日期 Date	2022-06-28

## 目录 INDEX

1	变更履历 Revision History .....	1-3
2	概述 Summary .....	2-4
3	技术要求 Technical requirements.....	3-4
	3.1 安全标准 Safety Standards.....	3-4
	3.2 Input .....	3-4
	3.3 Output.....	3-4
	3.4 可靠性及质量控制 Reliability and Quality Control .....	3-5
	3.5 测试线路图 Test Circuit .....	3-9
4	线路图 Schematic Diagram .....	4-9
5	电路板图 P.C.B.....	5-10
6	CORD 图（单位 unit: mm 颜色 color: Black） .....	6-11
7	AC CORD 图.....	7-12
7	外观示意图 Cord and Mechanical Drawing（单位 unit: mm 颜色 color: Black） .....	8-13
8	铭板标识 nameplate.....	9-14
9	包装方式 Packaging .....	10-14
10	材料清单 BOM.....	11-16

**\* The products limited warranty period is 18 months.  
(From date code of product.)**

**● The products meet RoHS requirements.**

批准 Approval:	<i>JB</i>	审核 Check:	<i>ZL</i>	制表 Execution:	<i>BMD</i>
-----------------	-----------	-----------	-----------	---------------	------------



<b>产品规格承认书</b> <b>SPECIFICATION</b>				文件编号 File No.	UME-EG-SP22062801/A1
品名 Product	开关电源 SPS	型号 Model	AD-AKA240P500	日期 Date	2022-06-28

**1 变更履历 Revision History**

版本 REV	变更日期 Date	变更内容 Content of Change	制表 Execution	审核 Check	批准 Approval
V1.0	2022-06-28	1.First Issue	BMD	ZL	JB

批准 Approval:	JB	审核 Check:	ZL	制表 Execution:	BMD
-----------------	----	-----------	----	---------------	-----



<b>产品规格承认书</b> <b>SPECIFICATION</b>				文件编号 File No.	UME-EG-SP22062801/A1
品名 Product	开关电源 SPS	型号 Model	AD-AKA240P500	日期 Date	2022-06-28

## 2 概述 Summary

2.1 本文件包含一般的客户要求及电气、机构和安全性能等方面的描述。

This document contains general customer requirements and those of specific electrical, mechanical and safety for this product.

## 3 技术要求 Technical requirements

### 3.1 安全标准 Safety Standards

Japan: 電安法别表第八【JET6108-61010-1015】

### 3.2 Input

Rated Input Voltage	100-240Vac
Operating Range	90-264Vac
Rated Input Frequency	50~60Hz
Rated Input Current	1.3A
Maximum Input Power	145W
Input Power (No Load)	0.21W Max
Primary Current Protection	Current fuse
AC Blade	PSE type AC Blade
AC Cable	<PS>E 3*0.75mm <sup>2</sup> VCTF L = 1800mm, Black, Lead-free soldering

### 3.3 Output

Rated output voltage	24V±5%
Rated Output Current	5000mA Max
Over Current Protection	5.5A Min @Vin=100Vac/240Vac
Line Regulation	The line regulation is less than ±2% while measuring at rated load and +/-5% of input voltage changing.
Ripple	≤ 200mVp-p
Switching Efficiency	88% minimum@ input 115AC/230VAC to meet DOE6
DC Plug	Φ2.1*5.5*9.5(EIAJ)
DC Cord	18AWG UL2464 L = 1500mm, Black, Lead-free soldering

批准 Approval:	<i>JB</i>	审核 Check:	<i>ZL</i>	制表 Execution:	<i>BMD</i>
-----------------	-----------	-----------	-----------	---------------	------------



<b>产品规格承认书</b> <b>SPECIFICATION</b>				文件编号 File No.	UME-EG-SP22062801/A1
品名 Product	开关电源 SPS	型号 Model	AD-AKA240P500	日期 Date	2022-06-28

**3.4 可靠性及质量控制 Reliability and Quality Control**

**【Electrical Test Items】**

Item		Conditions	Criteria
1	Leakage Current	Measure the leakage current between Primary and Secondary when adding rated input. AC input = Rating voltage (100/240V)	Less than 250 $\mu$ A
2	ESD Test	1.Test is conducted at room temperature/humidity.(25 $^{\circ}$ C, RH 50-60%) 2.Test set is 150pF/150 $\Omega$ . 3.(1) $\pm$ 4KV:Contact discharge test. +phase: 3times, -phase: 3times, total: 6times. (2) $\pm$ 8KV:Air discharge test. +phase : 3times, -phase: 3times, total: 6times. (Note) After each ESD test, it should be discharged.	No malfunction (must be in spec after test).
		1.Test is conducted at room temperature/humidity.(25 $^{\circ}$ C, RH 50-60%) 2.Test set is 150pF/150 $\Omega$ . 3.(1) $\pm$ 6KV:Contact discharge test. + phase: 3times, -phase: 3times total: 6times. (2) $\pm$ 10KV:Air discharge test. + phase: 3times, -phase: 3times, total: 6times. (Note)After each ESD test, it should be discharged.	No destruction
	ESD Test (Ability test)	1.Test is conducted at room temperature/humidity.(25 $^{\circ}$ C, RH 50-60%) 2.Test condition: 150pF/150 $\Omega$ . 3,Contact discharge / Air discharge 4,Load: 1)no load 2)rated load 5. Impressing 10 times continuously to plus and minus each. 6,Discharging once after impressing 10 times (To confirm the capacity of unit up to the unit destroyed)	It confirms at which voltage value the adapter breaks.(Note: Not part of qualification)
3	Hi-pot test	Condition=AC3000V, 1min. Test place=Between AC blade and DC plug Sensitivity current=10mA	No malfunction. (damage, arc, breakdown etc)
4	Insulation resistance	DC500V, 1min. Between AC blade and DC plug	More than 100M $\Omega$
5	Temperature Rise Test	1.Apply rating input voltage(100/240V), 2.Load: Load meter with load 3.Measure the surface temperature of the adaptor 4.T ambient = The room temperature 5.Condition: Until it carries out temperature saturation (the definition of temperature than 1 $^{\circ}$ C in 1 hour).	Housing surface Temperature rise is less than 65K.

批准 Approval:	JB	审核 Check:	ZL	制表 Execution:	BMD
-----------------	----	-----------	----	---------------	-----



<b>产品规格承认书</b> <b>SPECIFICATION</b>				文件编号 File No.	UME-EG-SP22062801/A1
品名 Product	开关电源 SPS	型号 Model	AD-AKA240P500	日期 Date	2022-06-28

		1.Apply rating input voltage(100/240V), 2.No Load 3.Measure the surface temperature of the adaptor	Housing surface Temperature rise is less than 15K.
6	Input over / under	Apply voltage=(rating input voltage)x(1±30%) Impressed time : 24h	No destruction
7	EMI/Conducted Emission	Telephone stand by mode with rapid-charge condition	Conform to: FCC 47CFR Part 15 Class B (for US) EN55022
8	Surge	IEC61000-4-5 1.2×50µs 1.0KV Positive and negative all three times, Current limiting impedance 100 Ω, Time interval 30 seconds min.	No destruction.

**【Environmental Test Items】**

Item	Conditions	Criteria
1	Temperature range Electrical performance guarantees temperature range: 0℃ to 40℃、 Electrical performance not guarantees working temperature range: -20℃ to 50℃ Storage temperature range: -30℃ to 80℃	No abnormal appearance, mechanic performance or electric performance
2	High Temperature Leave 1. Temperature 80℃ for 96 hours. 2. After that test, test set is left in normal temperature, humidity condition for more than 1hour, then evaluate.	No abnormal appearance, mechanic performance or electric performance
3	Low Temperature Leave 1. Temperature -30℃ for 96 hours. 2. After that test, test set is left in normal temperature, humidity condition more than 1(hour), then evaluate.	
4	High Temperature Humidity 1. Temperature 50℃, air moisture 90-95% RH for 96 hours. 2. After that test, test set is left in normal temperature, humidity condition more than 30min, then evaluate.	
5	Temperature Humidity test 1. Temperature 40℃, air moisture 90-95% RH for 96 hours. 2. After that test, test set is left in normal temperature, humidity condition more than 30min, then evaluate.	
6	Heat Shock Test 1. Condition: -30℃/ 1 hour to +80℃/ 1 hour, 60 cycles 2. After that test, test set is left in normal temperature, humidity condition more than 1 hour, then evaluate.	
7	Heat/humidity Cycle Test A, C, D : RH=90 ± 10% B : RH= 90 ± 5% E : No limit After 5cycles, put EUT at room temperature/humidity condition	

批准 Approval:	JB	审核 Check:	ZL	制表 Execution:	BMD
-----------------	----	-----------	----	---------------	-----



<b>产品规格承认书</b> <b>SPECIFICATION</b>				文件编号 File No.	UME-EG-SP22062801/A1
品名 Product	开关电源 SPS	型号 Model	AD-AKA240P500	日期 Date	2022-06-28

8	Humidity	Operation is 10~85%. Storages is 5~95%	Non-condensing

**【Mechanical Test Items】**

Item	Conditions	Criteria
1	<b>Drop Test</b> Height of drop: 1m, 1times/each surface (total 6 times), Floor: Hardwood.	No parts remove, no abnormal mechanic performance, (outside scratches are acceptable)
2	<b>Package Drop Test</b> 1. Packaged condition. 2. Drop test points (1) 1 corner (2) 2 edges (3) 4 surfaces, Total: 7times drop test. 3. Height of drop:50cm. Bottom surface drop test only apply 65cm.	
3	<b>Unit Vibration Test</b> 1. Vibration condition:33.3Hz/min. 20.6m/s <sup>2</sup> 2. (1)Top/Bottom direction:4-hours (2)Right/Left direction:2-hours (3) Front/Back direction:2-hours	
4	<b>Package Vibration</b> 1.Vibration condition: 5-55-5Hz/2min. (1)Top/Bottom direction : 12.5(m/S <sup>2</sup> )30(min) (2) Right/left direction : 7.5(m/S <sup>2</sup> )15(min)*2	
5	<b>AC Plug in/out Test (AC Blade part)</b> 1. AC Plug in/out test more than 5000times 2.10(times/min). 1 time is in/out action.	A character do not disappear. Don't take the label off the main body
6	<b>Exfoliate with cellophane tape and examine it</b> Use Nichiban 18mm or 24mm width	
7	<b>The reliability to face each other to come off the label</b> ① -40℃ ② 80℃ ③ 50℃ 90% Each 96 hours ④ ③ After, it is a thermal shock examination of 96 cycles	
8	<b>No tally part step</b> Difference of the pitch by height differences of the tally part between casts	less than 0.25mm after an environmental examination

批准 Approval:	JB	审核 Check:	ZL	制表 Execution:	BMD
-----------------	----	-----------	----	---------------	-----



<b>产品规格承认书</b> <b>SPECIFICATION</b>				文件编号 File No.	UME-EG-SP22062801/A1
品名 Product	开关电源 SPS	型号 Model	AD-AKA240P500	日期 Date	2022-06-28

**【DC cord Test Items】**

Item	Conditions	Criteria
1 DC Cord strength (adaptor side / plug side)	1. Test part : Between adaptor and DC cord 2. Pull a cord with 98N(10Kgf) force 3. Time: 1min.	No abnormality such as wire cut, bushing come off
2 DC Cord Bending Test (adaptor side / plug side)	Weight = 4.9N(500g) Angle = +/-90° Cycles in every minute = 40times/min. Test cycles = 1000times Note: contrarotate 90°, and then rotate it clockwise with 180° (+90°~-90°), and at last return to origin. (1 Cycle : 0° ⇒ -90° ⇒ 0° ⇒ +90° ⇒ 0°)	Operate properly.
3 PLUG PULLING TEST1:	Apply a 29.4N (3kgf) static load on the strain relief of the plug device at 5-direction (Upper, lower, right, left, and push) for each 1 minute, The solder must not peel off from PCB, mechanical and electric characteristic shall be normal.	No abnormality such as cord cut, bushing comes off.

**【Safety Test Items】**

1 MTBF	Make a measurement condition, a calculation standard clear	More than 50,000 hours
2 Part materials	It is maintenance or the incombustibility of contact / part materials approaching it in an outer fence, the charge department of the electric part	same as UL94V-0; more than it
3 print board	Incombustibility	same as UL94V-0; more than it
4 No tally part step	Difference of the pitch by height differences of the tally part between casts	less than 0.25mm after an environmental examination

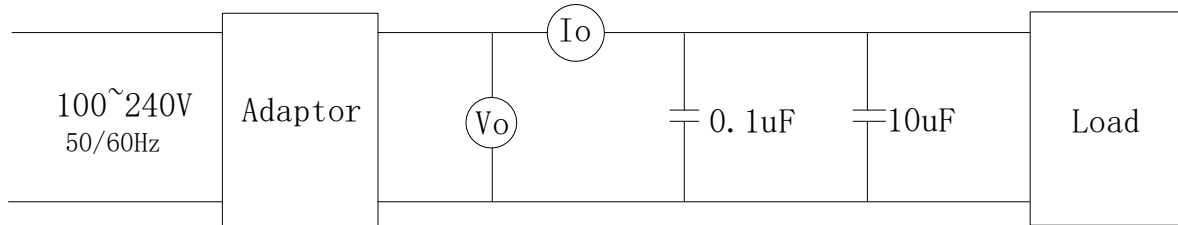
批准 Approval:	<i>JB</i>	审核 Check:	<i>ZL</i>	制表 Execution:	<i>BMD</i>
-----------------	-----------	-----------	-----------	---------------	------------



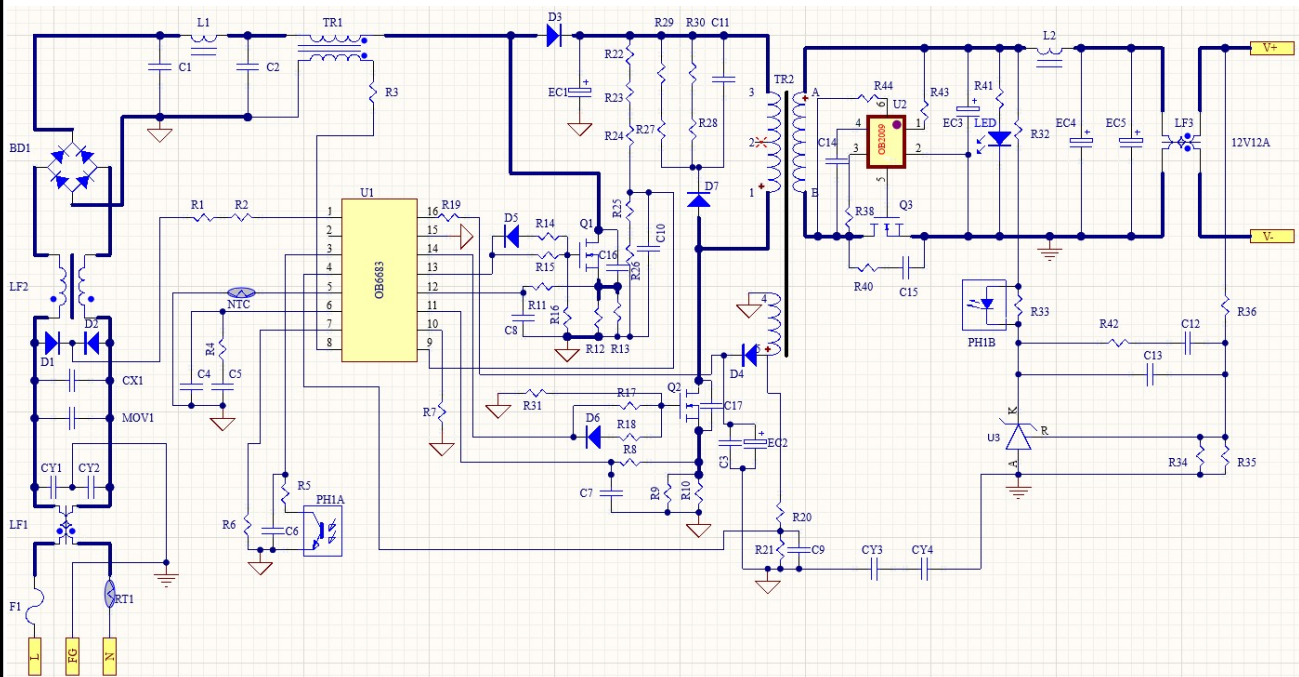


<b>产品规格承认书</b> <b>SPECIFICATION</b>				文件编号 File No.	UME-EG-SP22062801/A1
品名 Product	开关电源 SPS	型号 Model	AD-AKA240P500	日期 Date	2022-06-28

### 3.5 测试线路图 Test Circuit



### 4 线路图 Schematic Diagram

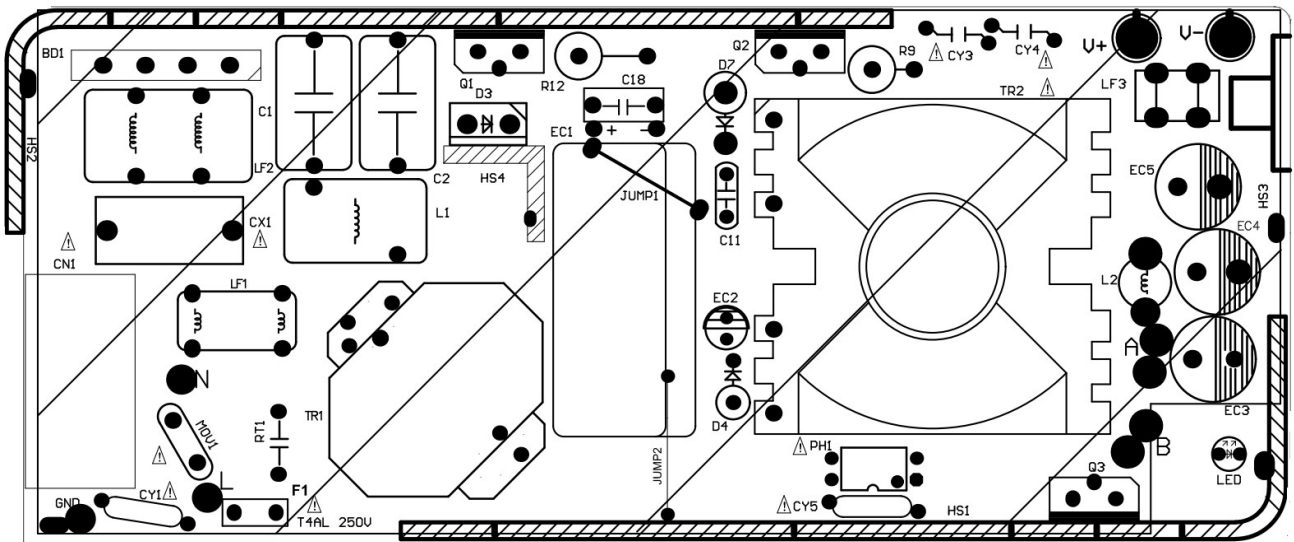
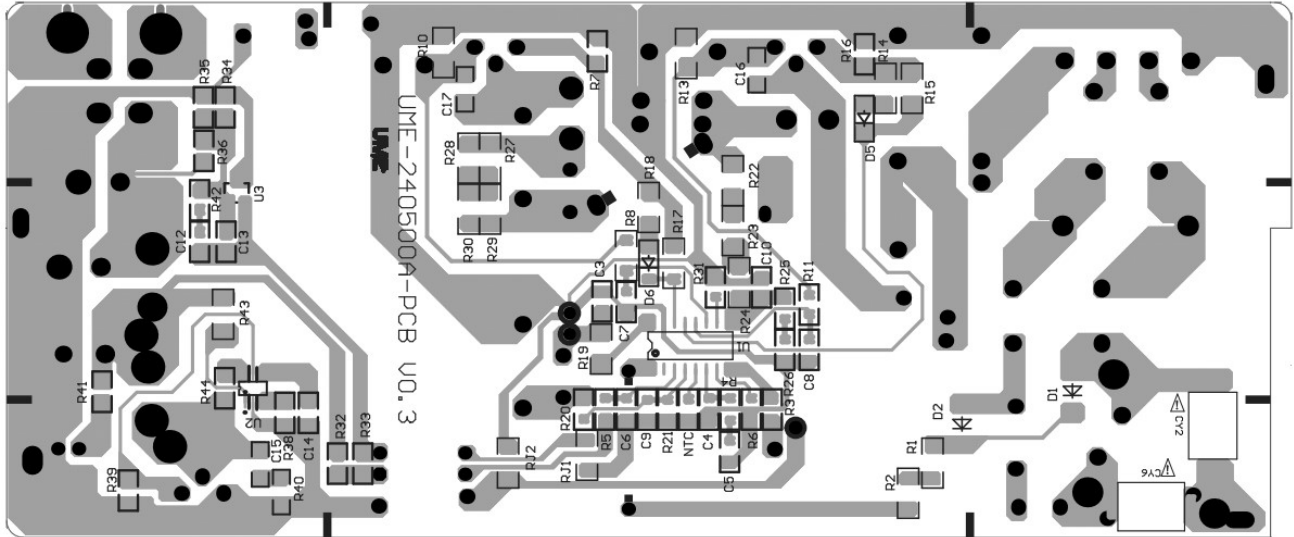


批准 Approval:	JB	审核 Check:	ZL	制表 Execution:	BMD
-----------------	----	-----------	----	---------------	-----



<b>产品规格承认书</b> <b>SPECIFICATION</b>				文件编号 File No.	UME-EG-SP22062801/A1
品名 Product	开关电源 SPS	型号 Model	AD-AKA240P500	日期 Date	2022-06-28

5 电路板图 P.C.B

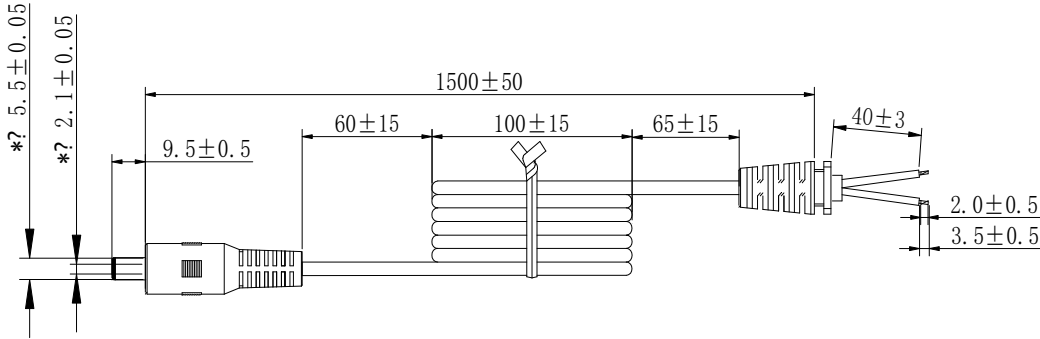


批准 Approval:	JB	审核 Check:	ZL	制表 Execution:	BMD
-----------------	----	-----------	----	---------------	-----



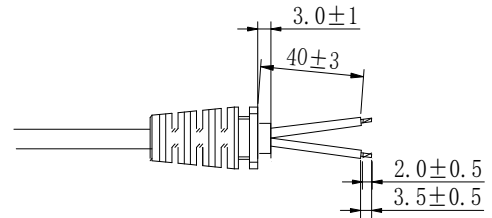
<b>产品规格承认书</b> <b>SPECIFICATION</b>				文件编号 File No.	UME-EG-SP22062801/A1
品名 Product	开关电源 SPS	型号 Model	AD-AKA240P500	日期 Date	2022-06-28

## 6 CORD图 (单位 unit: mm 颜色 color: Black)



备注:

1. 导线规格: 18AWG 2464 音叉型 黑色, 芯线颜色: 红色+黑色, 导线总长 1500mm; 材质符合RoHS要求。导线按图示尺寸捆扎、测试, 导线间应开路, 对应线头线尾应短路导通, 极性连接正确;
2. 两头剥线焊锡, 剥线长度 $3\text{mm}+1/-0$ 。剥线要求如图所示, 剥丝线焊锡的直径为 $2.1\text{mm MAX}$ 。接线方式: 红色芯线接PIN中心, 黑色芯线接外侧, 外模PG-017成型, SR-017成型; SR017尺寸为 $8.8*7.8\text{mm}$ 。
3. SR拉力测试: 吊重 $1\text{Kg}/10$ 分钟, 不可有位移, 吊重 $5\text{Kg}/1$ 分钟, 位移 $2\text{mm MAX}$
4. 插拔力测试: 插入力 $2\text{Kgf MAX}$ , 拔出力 $0.3\text{Kgf MIN}$ ; 插拔 $6000\text{MIN}$ 次不允许有电气和机械性能的损坏, 且满足拔出力 $0.1\text{Kgf MIN}$ ;
5. 摇摆测试: 吊重 $500\text{g}$ , 以 $40$ 次/分作 $90^\circ$ 往返, 每一往返为一次, 至少 $1000$ 次;
6. PLUG绝缘阻抗测试:  $100\text{M}\Omega \text{ MIN}$ 在 $500\text{DC}/\text{分}$ ; PLUG接触阻抗测试:  $100\text{m}\Omega \text{ MAX}$ ;
7. 导线, SR, PLUG非移行性依据厂内一般进行; 禁止使用VDE所禁用的物质。
8. 打\*号尺寸, 为入料检查项目;



接线方式

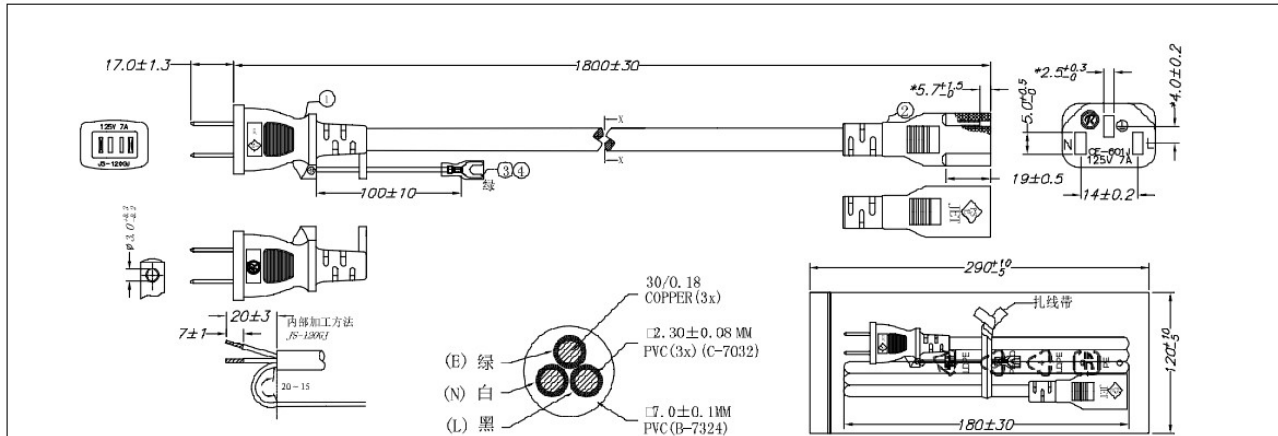
DC头中心针 —— 红色芯线  
DC外壳 —— 黑色芯线

批准 Approval:	JB	审核 Check:	ZL	制表 Execution:	BMD
-----------------	----	-----------	----	---------------	-----



<b>产品规格承认书</b> <b>SPECIFICATION</b>				文件编号 File No.	UME-EG-SP22062801/A1
品名 Product	开关电源 SPS	型号 Model	AD-AKA240P500	日期 Date	2022-06-28

## 7 AC CORD 图



备注:

- 1、线材规格: VCTF3 0.75/3C BLK L:1800mm
- 2、导线按图示尺寸捆扎、测试。导线间应开路, 对应线头线尾应短路导通。
- 3、摇摆测试: 吊重500g, 以40次/分作60°往返, 每一往返为一次, 至少1000次。
- 4、插头、线及接口符合PSE(日本)标准。
- 5、材质符合“RoHS”要求。
- 6、测试参数: 内高压3KV, 时间1S, 外高压4KV, 时间为2S, 绝缘 5MQmin, 时间1S 漏电流0.5mA。
- 7、头部: JS-120GJ 尾部: CE-601J
- 8、插拔力: 15N-60N
- 9、印字内容: R31945 RoHS <PS>E JET VCTF 3\*0.75mm² (30/0.18mm) 300V

FUND RESOURCES ELECTRIC INDUSTRY CO., LTD SHANGHANG YEAR

零部件明细表

序号	物料规格	颜色	物料编号	数量
1	JS-120G1 PLUG	000黑	—	1
	目标两插单白片	银板/白	BL-JS01-1	1
	目标两插内胆	黑	Y6-JS02-B	1
	PVC (G-5086)	000黑	B65086X000	—
2	CE-601J CONNECTOR	000黑	—	—
	品字插U型端子	黄铜	BL-CN03-0	—
	品字压线脚	白色	Y6-CN05-BW	—
	PVC (G-7082)	000黑	B67082X000	—
3	4.2寸捆扎	—	IV-4305-2 镀锌	1
4	250-3.0直型PVC护套	—	KV-25030-9 白色	—
辅料	PE凹凸自封袋	N3B-2904120-D	透明	—
辅料	无铁丝PET扎线带	GT000-1E	—	1
辅料	建润纸箱	M10001	—	—

厦门友盟电子有限公司

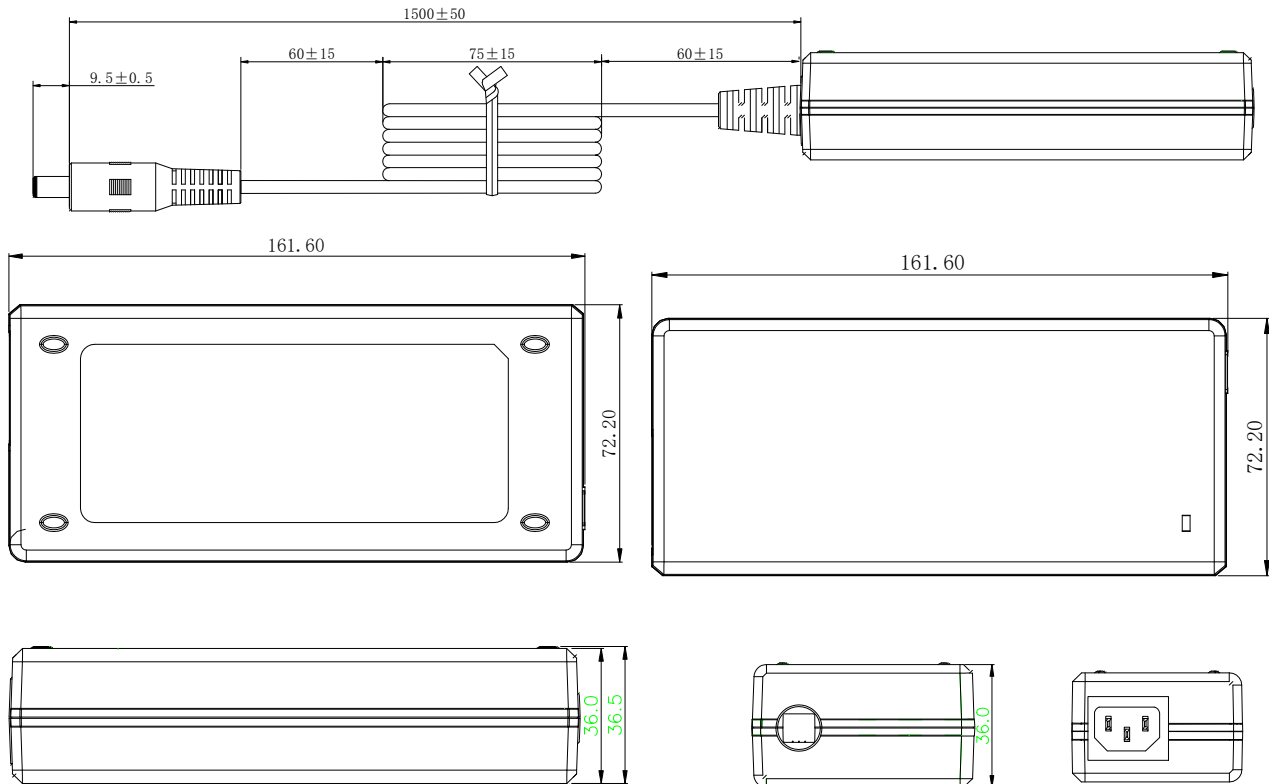
版次	变更内容	制图	审核	批准	单位	mm	图 称	输入电源线
		白美端			比例	2022-6-15	图 号	CORD-240500A
			编号	XXXXXXX	版本			
			产品型号	AD-AKA240P500				

批准 Approval:	JB	审核 Check:	ZL	制表 Execution:	BMD
-----------------	----	-----------	----	---------------	-----



<b>产品规格承认书</b> <b>SPECIFICATION</b>				文件编号 File No.	UME-EG-SP22062801/A1
品名 Product	开关电源 SPS	型号 Model	AD-AKA240P500	日期 Date	2022-06-28

8 外观示意图 Cord and Mechanical Drawing (单位 unit: mm 颜色 color: Black)

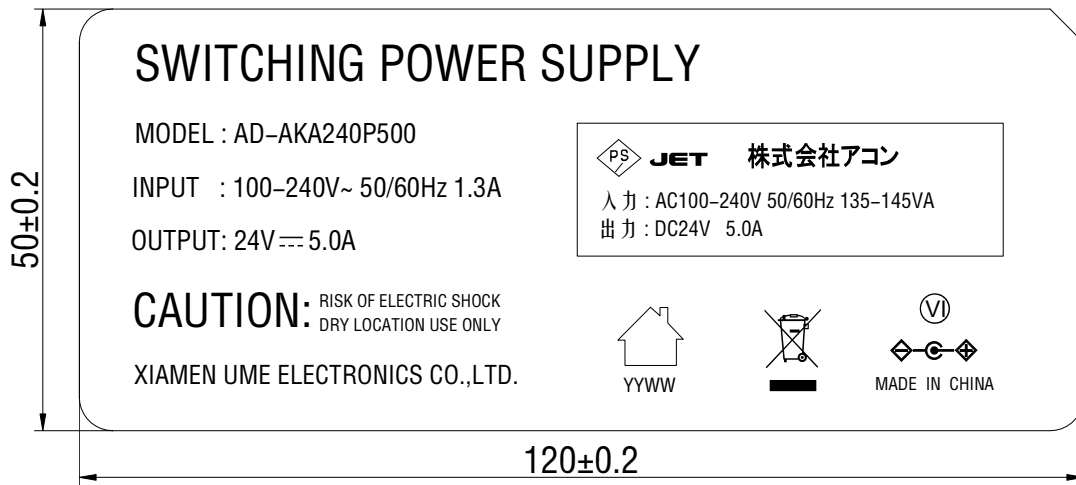


批准 Approval:	JB	审核 Check:	ZL	制表 Execution:	BMD
-----------------	----	-----------	----	---------------	-----

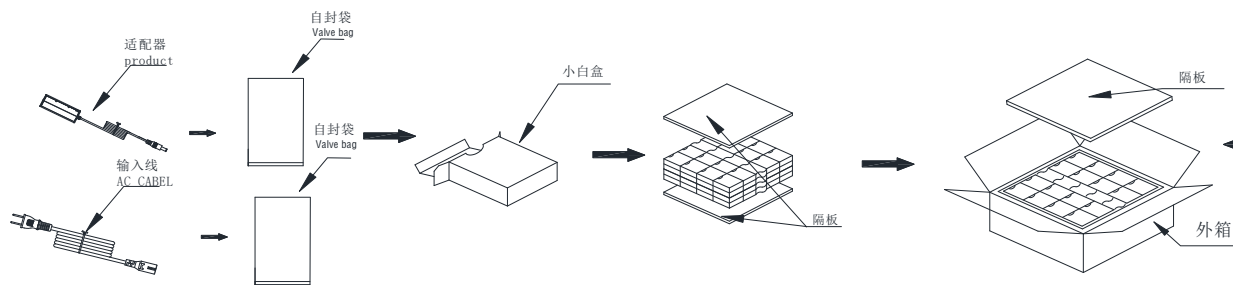


产品规格承认书 SPECIFICATION				文件编号 File No.	UME-EG-SP22062801/A1
品名 Product	开关电源 SPS	型号 Model	AD-AKA240P500	日期 Date	2022-06-28

9 铭板标识 nameplate



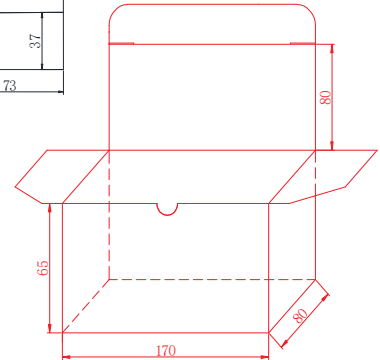
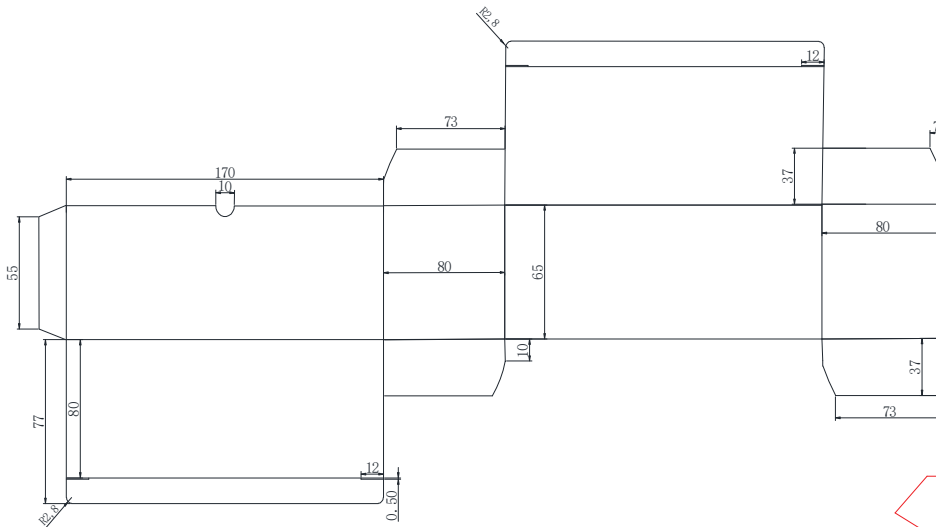
10 包装方式 Packaging



批准 Approval:	JB	审核 Check:	ZL	制表 Execution:	BMD
-----------------	----	-----------	----	---------------	-----



<b>产品规格承认书</b> <b>SPECIFICATION</b>				文件编号 File No.	UME-EG-SP22062801/A1
品名 Product	开关电源 SPS	型号 Model	AD-AKA240P500	日期 Date	2022-06-28



**备注:**

1. 纸质: 三层瓦楞纸
2. 公差为±0.1mm
3. 符合RoHS要求。
4. 图纸上的尺寸为内部尺寸

批准 Approval:	<i>JB</i>	审核 Check:	<i>ZL</i>	制表 Execution:	<i>BMD</i>
-----------------	-----------	-----------	-----------	---------------	------------





<b>产品规格承认书</b> <b>SPECIFICATION</b>				文件编号 File No.	UME-EG-SP22062801/A1
品名 Product	开关电源 SPS	型号 Model	AD-AKA240P500	日期 Date	2022-06-28

## 11 材料清单 BOM

NO	ITEM	DESCRIPTION	SPECIFICATION	QTY	MANUFACTURER
1	PCB	PCB	UME-240500A-PCB	1	TXS/JT/MW/HG
2	R1,R2	Chip R	10K $\Omega$ ±5% 1206	2	YAGEO/FENG HUA
3	R3	Chip R	33K $\Omega$ ±1% 0805	1	YAGEO/FENG HUA
4	R4	Chip R	47K $\Omega$ ±1% 0805	1	YAGEO/FENG HUA
5	R5	Chip R	22 $\Omega$ ±5% 0805	1	YAGEO/FENG HUA
6	R6	Chip R	15K $\Omega$ ±5% 0805	1	YAGEO/FENG HUA
7	R7,R16	Dip R	10K $\Omega$ ±5% 0805	2	YAGEO/FENG HUA
8	R8	Chip R	680 $\Omega$ ±5% 1206	1	YAGEO/FENG HUA
9	R10	Chip R	1 $\Omega$ ±1% 1206	1	YAGEO/FENG HUA
10	R13	Chip R	0.51 $\Omega$ ±1% 1206	1	YAGEO/FENG HUA
11	R11	Chip R	510 $\Omega$ ±5% 0805	1	YAGEO/FENG HUA
12	R14	Chip R	30 $\Omega$ ±5% 1206	1	YAGEO/FENG HUA
13	R15,R44	Chip R	100 $\Omega$ ±5% 1206	2	YAGEO/FENG HUA
14	R17	Chip R	510 $\Omega$ ±5% 1206	1	YAGEO/FENG HUA
15	R18	Chip R	51 $\Omega$ ±5% 1206	1	YAGEO/FENG HUA
16	R19	Chip R	1 $\Omega$ ±5% 1206	1	YAGEO/FENG HUA
17	R20,R25	Chip R	150K $\Omega$ ±5% 0805	2	YAGEO/FENG HUA
18	R21	Chip R	22K $\Omega$ ±5% 0805	1	YAGEO/FENG HUA
19	R22,R23	Chip R	10M $\Omega$ ±5% 1206	2	YAGEO/FENG HUA
20	R24	Chip R	6.2M $\Omega$ ±5% 1206	1	YAGEO/FENG HUA
21	R26	Chip R	12K $\Omega$ ±5% 0805	1	YAGEO/FENG HUA
22	R27,R28,R29,R30	Chip R	75K $\Omega$ ±1% 1206	4	YAGEO/FENG HUA
23	R31	Chip R	51K $\Omega$ ±1% 0805	1	YAGEO/FENG HUA
24	R32	Chip R	1K $\Omega$ ±5% 0805	1	YAGEO/FENG HUA
25	R33,R42	Chip R	5.1K $\Omega$ ±5% 0805	2	YAGEO/FENG HUA
26	R34	Chip R	2.0M $\Omega$ ±1% 0805	1	YAGEO/FENG HUA

批准 Approval:	<i>JB</i>	审核 Check:	<i>ZL</i>	制表 Execution:	<i>BMD</i>
-----------------	-----------	-----------	-----------	---------------	------------





# 厦门友盟电子有限公司

XIAMEN UME ELECTRONICS CO.,LTD.

<b>产品规格承认书</b> <b>SPECIFICATION</b>				文件编号 File No.	UME-EG-SP22062801/A1
品名 Product	开关电源 SPS	型号 Model	AD-AKA240P500	日期 Date	2022-06-28

27	R35	Chip R	10.5K $\Omega$ ±1% 0805	1	YAGEO/FENG HUA
28	R36	Chip R	91K $\Omega$ ±5% 0805	1	YAGEO/FENG HUA
29	R38	Chip R	51K $\Omega$ ±1% 0805	1	YAGEO/FENG HUA
30	R40	Chip R	22 $\Omega$ ±5% 1206	1	YAGEO/FENG HUA
31	R41	Chip R	20K $\Omega$ ±5% 0805	1	YAGEO/FENG HUA
32	R43	Chip R	10 $\Omega$ ±5%1206	1	YAGEO/FENG HUA
33	RJ1,RJ2	Chip R	0 $\Omega$ ±5% 1206	2	YAGEO/FENG HUA
34	C3	Chip C	104 50V±10% 0805 X7R	1	YAGEO/FENG HUA
35	C4	Chip C	224 50V±10% 0805 X7R	1	YAGEO/FENG HUA
36	C5	Chip C	684 50V±10% 0805 X7R	1	YAGEO/FENG HUA
37	C6,C8	Chip C	331 50V±10%0805 X7R	2	YAGEO/FENG HUA
38	C7	Chip C	471 50V±10% 1206 X7R	1	YAGEO/FENG HUA
39	C9,C13	Chip C	10PF 50V 0805 COG	2	YAGEO/FENG HUA
40	C10	Chip C	472 50V±5% 0805 X7R	1	YAGEO/FENG HUA
41	C12	Chip C	473 50V±10% 0805 X7R	1	YAGEO/FENG HUA
42	C14	Chip C	105 50V±10% 0805 X7R	1	YAGEO/FENG HUA
43	C15	Chip C	102 500V±10% 1206 X7R	1	YAGEO/FENG HUA
44	C16,C17	Chip C	101 1KV±5% 1206 X7R	2	YAGEO/FENG HUA
45	D1,D2	Diode	M7 SMA	2	JF/MIC/PANJIT
46	D3	Diode	MUR860T 8A 600V TO-220AC	1	JF/MIC/PANJIT
47	D4	Diode	FR107 1000V 1A DO-41	1	JF/MIC/PANJIT
48	D5,D6	Diode	1N4148W SOD-123	2	JF/MIC/PANJIT
49	D7	Diode	1N5408 3A/1000V,DO-201	1	JF/MIC/PANJIT
50	D3,D3,D7,D4,CY3, CY4,Q1,Q2	Magnetic beads	3*1.5*3.5 ui850	8	SMR/XCDZ
51	LED	LED	LED Green $\Phi$ 3mm	1	Hong Qi
52	U1	IC	OB6683 SOP16	1	On Bright
53	U2	IC	OB2009 SOP-23-6	1	On Bright

第 11-17 页 Page 11-17 共 20 页 Total 20 Page

批准 Approval:	JB	审核 Check:	ZL	制表 Execution:	BMD
-----------------	----	-----------	----	---------------	-----



# 厦门友盟电子有限公司

XIAMEN UME ELECTRONICS CO., LTD.

<b>产品规格承认书</b> <b>SPECIFICATION</b>				文件编号 File No.	UME-EG-SP22062801/A1
品名 Product	开关电源 SPS	型号 Model	AD-AKA240P500	日期 Date	2022-06-28

54	U3	IC	CJ431±0.5% SOT-23	1	CD
55	C1,C2	M Cap	105J400V P=15mm CBB21	2	STE
56	C18	M Cap	103J450V P=7.5mm CBB21	1	STE
57	C11	M Cap	332 1KV±5% P=5mm	1	HZL
58	RT1	RT1	2.5Ω 3A NTC 2.5D-9	1	XQ
59	MOV1	MOV1	07D471±10%	1	STE
60	EC1	E Cap	120uF 450V±20% 105℃ Φ16*35mm(HXW)	1	RUBYCON
61		E Cap	120uF 450V±20% 105℃ Φ16*40mm(CXW)		RUBYCON
62		E Cap	120uF 450V±20% 105℃ Φ16*40mm(QXW)		RUBYCON
63		E Cap	120uF 450V±20% 105℃ Φ16*40mm(BHW)		RUBYCON
64	EC2	E Cap	22uF 50V±20% 105℃ Φ5*11mm(YXG)	1	RUBYCON
65	EC3,EC4,EC5	E Cap	560uF 35V±20% 105℃ Φ10*20mm(ZLH)	3	RUBYCON
66	R9,R12	R	0.15Ω ±1% 2W	2	CS/HXH/ ZY
67	LF1	Inductance	1.6mH ±20% φ0.6mm 2UEW+TLW	1	HXH/ZY
68	LF2	Inductance	20mH ±20% φ0.6mm 2UEW	1	HXH/ZY
69	LF3	Inductance	280uH MIN φ1.2mm UEW+UEW	1	HXH/ZY
70	L1	Inductance	360uH MIN. Φ0.7mm 2UEW 65T	1	HXH/ZY
71	L2	Inductance	1.2uH MIN D4*18 Φ1.2	1	HXH/ZY
72	CY1,CY2	Y cap	Y1 222 4000V±20%	2	STE/HJ
73	CY3,CY4	Y cap	Y2 472 250V±20% P=7.5mm	2	STE/HJ
74	CX1	X Cap	*0.47uF 250V±20% P=15mm	1	STE
75	CX2	X Cap	0.22uF 275V±20% P=10mm	1	STE
76	TR1	TRANSFMOR	TR-240500A RM10	1	HXH/UME/JQ
77	TR2	TRANSFMOR	TR-240500B PQ4020	1	HXH/UME/JQ
78	FI	FUSE	*T4A/250V	1	XC/FYS
79	GND	Tube	Φ5mm 125℃(UL)	10	Sanlian/WOER
80	R9,R12	Tube	Φ5mm 125℃(UL)	15*2	Sanlian/WOER

第 11-18 页 Page 11-18 共 20 页 Total 20 Page

批准 Approval:	JB	审核 Check:	ZL	制表 Execution:	BMD
-----------------	----	-----------	----	---------------	-----



# 厦门友盟电子有限公司

XIAMEN UME ELECTRONICS CO., LTD.

<b>产品规格承认书</b> <b>SPECIFICATION</b>				文件编号 File No.	UME-EG-SP22062801/A1
品名 Product	开关电源 SPS	型号 Model	AD-AKA240P500	日期 Date	2022-06-28

81	BD1	RectifierBridge	WRGBU610 1000V 6A P=5mm	1	World
82			GBU610 1000V 6A P=5mm		JF
83	Q1,Q2	MOSFEET	MPSA65M170 650V TO-220F 0.17Ω max	1	XCZ
84	Q3	MOSFEET	KS1501CA 120A 150V TO-220 Rds 11mΩ	1	GUANYU
85	BD1	Thermal film	15*25*3mm	1	GHT
86	D3,Q4	Thermal film	52*30*2.5mm	2	GHT
87	Q1,Q2,Q3	Screw	Φ3*8	3	Yunzhan/jixin
88	Q1,Q2,D7	Nut	Φ3mm	3	Yunzhan/jixin
89		Insulationsheet	PET 0.2*(10*15+20*22)mm	1	YHX
90	Q3	Insulation sheet	BUSHING TO-220	1	GHT
91	Q3	Silicon Sheet	13*19*0.25mm	1	GH
92	HS1,HS2	Heat Sink	SINK-120800T V1.0	2	XZ
93	HS3	Heat Sink	SINK-240500T1 V1.0 (62*148*0.5mm)	1	XZ
94	HS4	Heat Sink	SINK-090200C-01 V1.1	1	XZ
95	HS1	Mike pull tape	180mm *82mm *0.05mm	1	HXH
96	HS3,	Mike pull tape	115mm *115mm *0.05mm	1	HXH
97	HS3,	Mike pull tape	63mm *50mm *0.05mm	1	HXH
98	EC1	Mike pull tape	20mm *20mm *0.05mm	1	HXH
99	PH1	Photo	EL-817MB DIP-4 P=10.2	1	Everlight
100		Photo	BPC-817MB DIP-4 P=10.2		Bright Led
101	JUMP1	Jump line	Φ0.8mm 24mm	1	UME
102	JUMP2	Jump line	Φ0.3mm 25mm	1	UME
103	CN1	AC INLET	ST-A04-001J-T3T4	1	Chenli/BEJ
104		Case	UMED02-A BK	1	JLF/YGE
105		Case	UMED02-B BK	1	JLF/YGE
106		Light Pipe	4.52*2.01*2.5+Φ6*Φ4.52 d=9.04mm	1	JinTonZhou
107		DC cord	Φ2.1*5.5*9.5mm L:1500mm SR017 18AWG 2464	1	DPK/GC

第 11-19 页 Page 11-19 共 20 页 Total 20 Page

批准 Approval:	JB	审核 Check:	ZL	制表 Execution:	BMD
-----------------	----	-----------	----	---------------	-----



<b>产品规格承认书</b> <b>SPECIFICATION</b>				文件编号 File No.	UME-EG-SP22062801/A1
品名 Product	开关电源 SPS	型号 Model	AD-AKA240P500	日期 Date	2022-06-28

108		AC Cable	<PS>E 3*0.75 mm <sup>2</sup> VCTF L=1800mm Black,	1	Kailiangao/JR
109		Valve bag	140*210*0.05mm	1	Xincheng
110		Valve bag	95*155*0.05mm	1	Xincheng
111		Out carton	350*345*280mm	0.025	XinRuicheng/ FuXing
112		Partition	345*340*3mm	0.05	XinRuicheng/ FuXing
113		BOX	170*80*65mm	1	XinRuicheng/ FuXing
114		UL Bond	UB-100	0.55	U-BAN
115		Solder Bar	Pb free	4	YUNNANXIYE
116		Solder wire	Pb free	0.6	YUNNANXIYE

批准 Approval:	<i>JB</i>	审核 Check:	<i>ZL</i>	制表 Execution:	<i>BMD</i>
-----------------	-----------	-----------	-----------	---------------	------------